



Alankar Crown

3 BHK
Apartment

Rajakilpakkam
(Shivasakthi Nagar)

Key Features



CCTV Camera



Elevator



Invertor Available



Video Door Phone



Teak Wood Main
Doors



Automatic Water
Level Controller



Independently
Car Parking



Wall mount Closet



Granite Staircase &
Granite Lobby

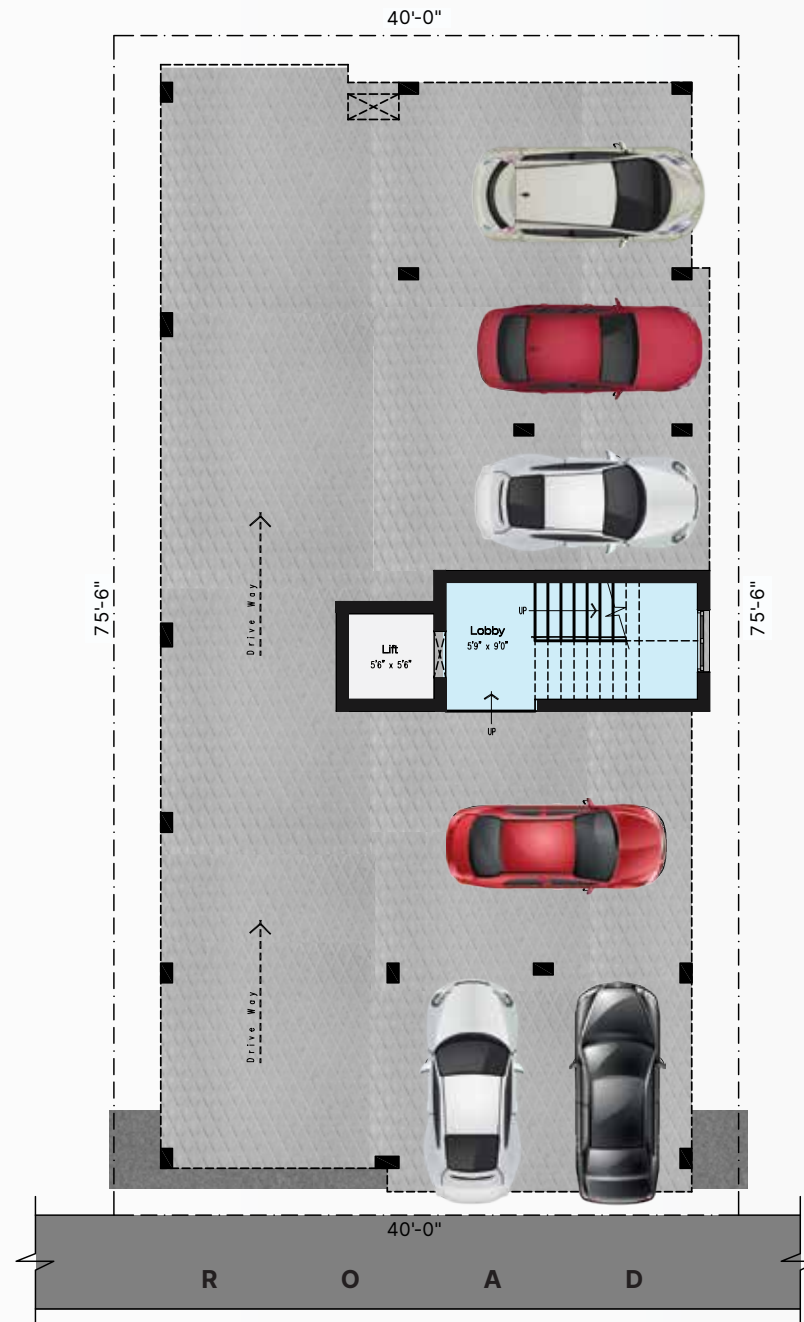


Water Proofing at
Bathrooms



UPVC Window &
Ventilator

Stilt Floor Plan



(Site / Stilt Floor Plan)

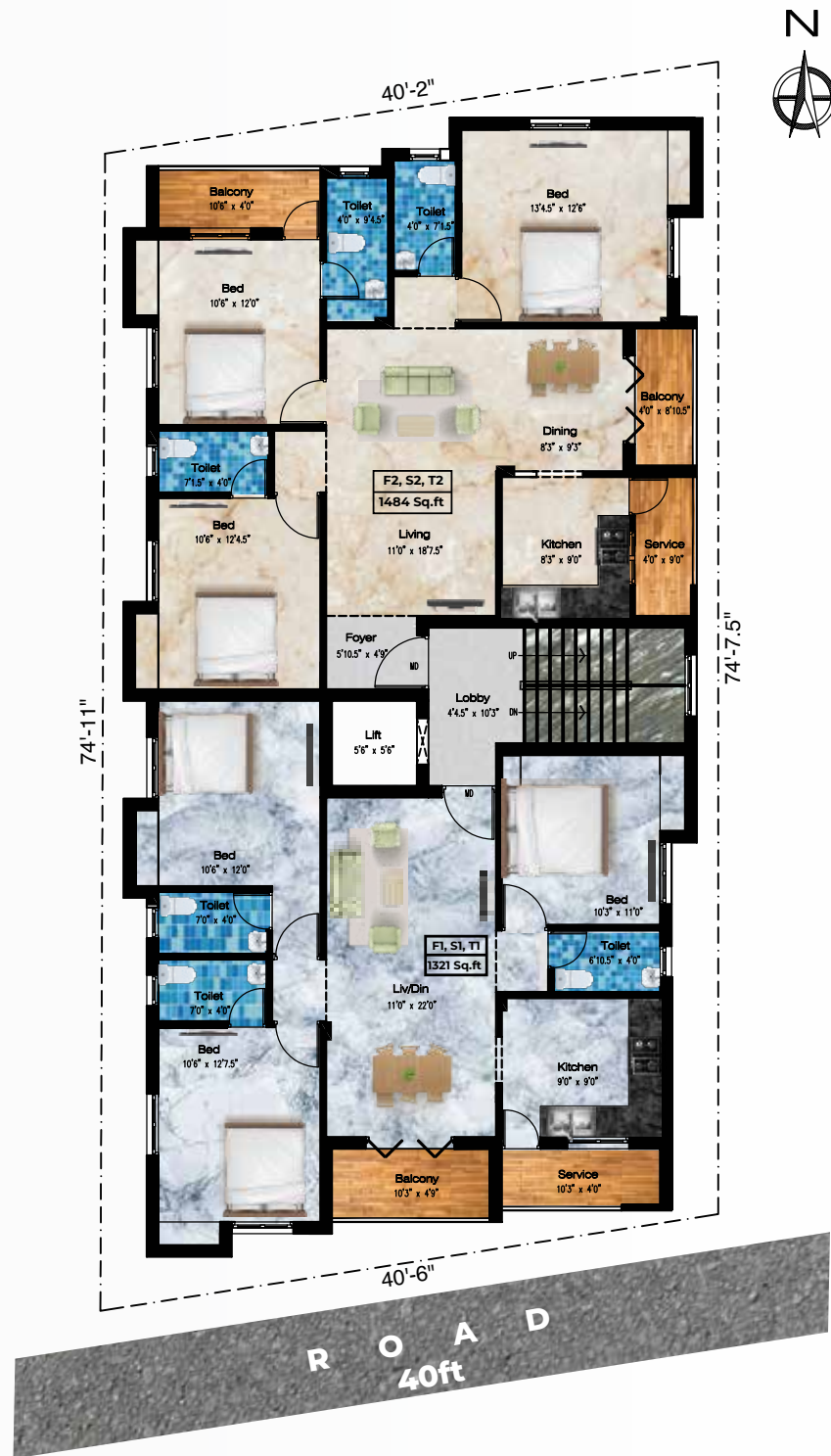
Typical Floor Plan



East Facing
 F2, S2, T2 - 1484 Sq.ft
3 BHK



North Facing
 F1, S1, T1 - 1321 Sq.ft
3BHK





3D Floor Plan

Location Advantage



SCHOOLS

1 Km from Zion Matriculation School

1.8 Km from Alpha International School

650 m from Vani Matriculation High School

650 M from MAV School



HOSPITALS

1.9 Km from New Life Hospital

2.8 Km from Bharat Medical College & Hospital

600 m from Annai Arul Hospital



COLLEGES

4.9 Km from Madras Christian College

2.5 Km from Bharath Medical & Engineering

2.2 Km from SIVET College

2.9 Km from New Prince Shri Bhavani College



LAND MARK

220 m from Sridevi Nagar Main Road

550 m from Madambakkam Main Road

1.8 Km from Velachery - Tambaram Main Road

Location Highlights



Specifications



Elevation

Texture Putty with Light



Kitchen

Granite slab with Stainless steel sink 304 Grade with granite



Door

First Quality Main Door Teak Wood Frame & Teak Wood Door. Varnish Finish for Main doors Synthetic Enamel Paint for doors and Bedroom



Electricity

Three Phase EB Provision, A/C Socket for All Bedroom, Only Branded ISIS Mark Materials



Window

50 mm frame UPVC Openable window with safety grill



Flooring

Vitrified (48X24) tiles, Granite steps (First quality Flooring)

BRANDS

Cement - Dalmia or Chettinad

Bathroom Fittings - Parryware, Jaguar

Wiring - Orbit

Switches - GM 10

Paint - Asian Paints Emulsion

Tiles - KAG

Steel - Arun TMT fe 550

Tiles - 48"X24" Vetrified

Site Images



Location Highlights





+91 95515 47777

projects@southlanddevelopers.in

www.southlanddevelopers.in

