



# ALANKAR VRIDHI VILLAS



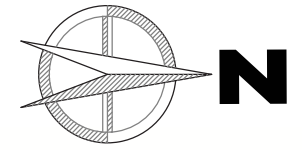
# ACTUAL SITE IMAGE



# 3D IMAGE

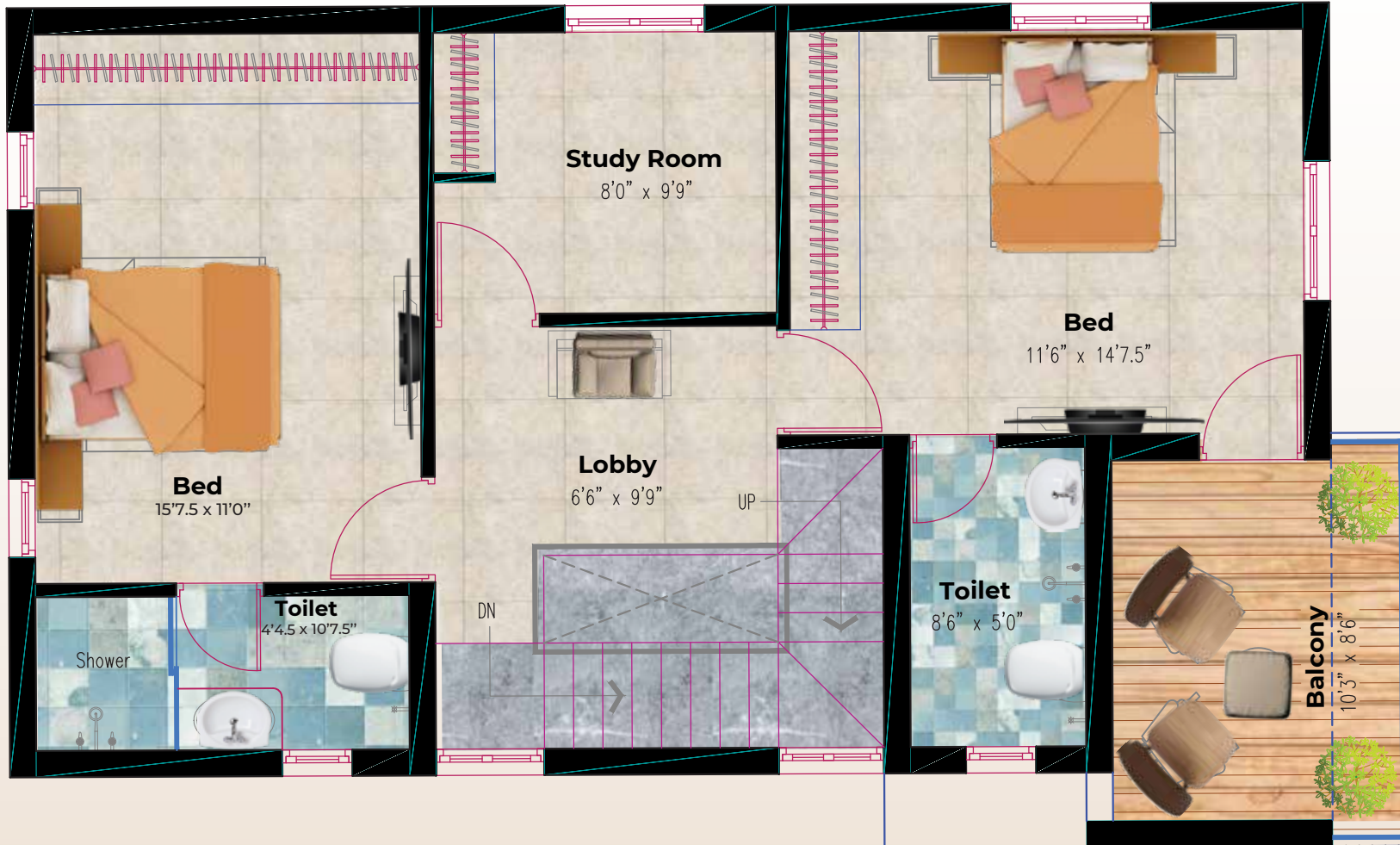
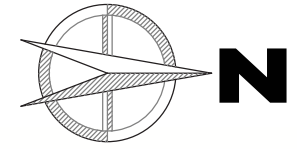


# 2D PLAN

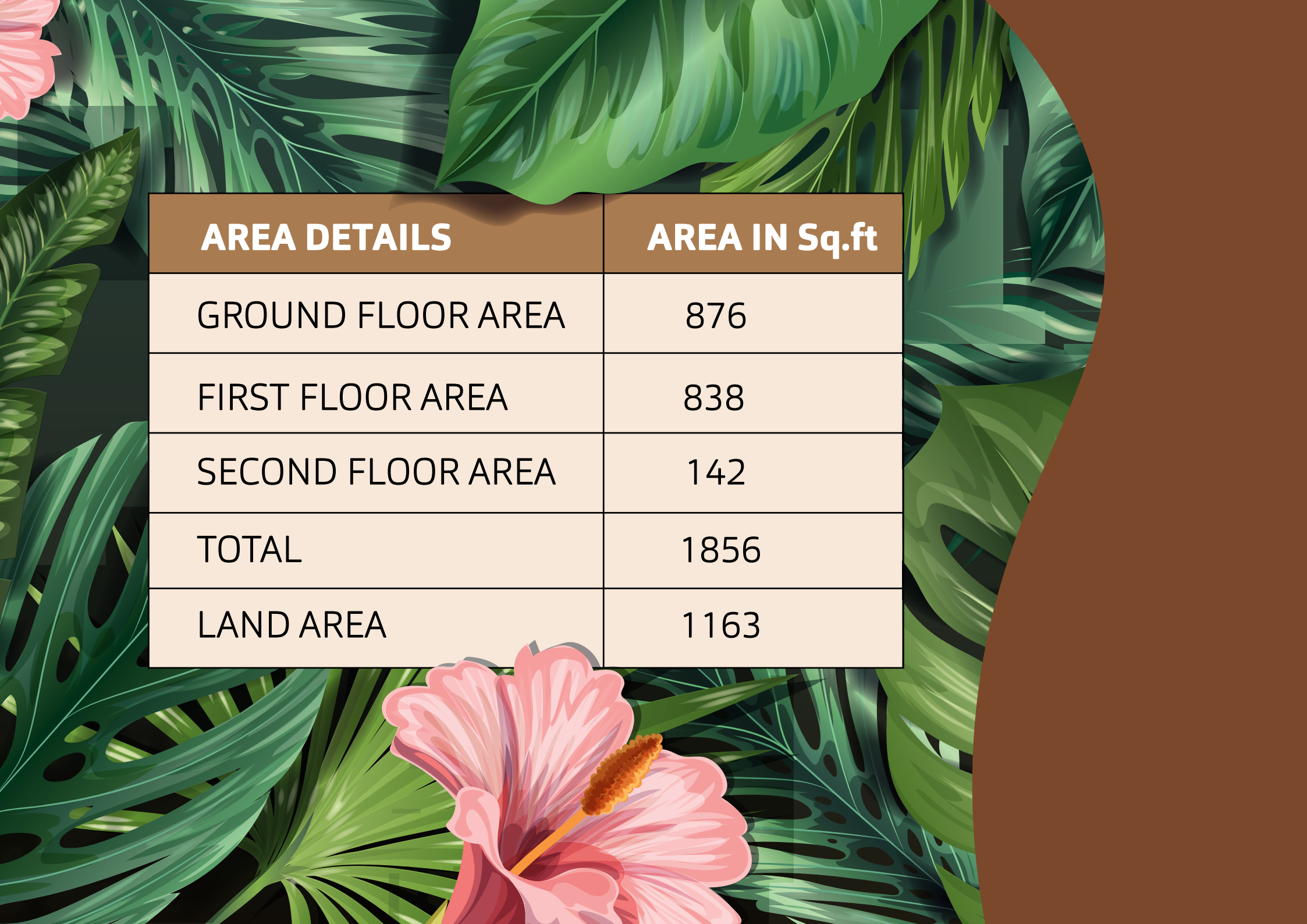


## SITE / GROUND FLOOR PLAN

# 2D PLAN



## FIRST FLOOR PLAN



<b>AREA DETAILS</b>	<b>AREA IN Sq.ft</b>
GROUND FLOOR AREA	876
FIRST FLOOR AREA	838
SECOND FLOOR AREA	142
TOTAL	1856
LAND AREA	1163

## 3D IMAGES



## DAY VIEW



## NIGHT VIEW



# Location Advantages



**EXACTLY 1.5 KM FROM**  
TAMBARAM BYPASS ROAD



**EXACTLY 1KM FROM**  
ZION SCHOOL





**Exactly 3 Km from**  
BHARATH MEDICAL COLLEGE  
& HOSPITAL



**Exactly 2.2 Km from**  
Joy Health Centre

# Site Image



**Camp Road**



**Agaram Main Road**



Close to  
**NEW PERUNGALATHUR**



Close to  
**SALAIYUR**

Close to  
**TAMBARAM**





NH 32

GST ROAD

TRAMBARAM BYPASS ROAD

AGARAM MAIN RD

AGARAM MAIN RD

MAPPEDU



GKM COLLEGE OF ENGINEERING

GKM NAGAR

GKM VIDYASHRAM SCHOOL



ZION SCHOOL (ZIPS)



ALANKAR VRIDHI VILLAS



BHARATH MEDICAL COLLEGE AND HOSPITAL

SELAIYUR

YESWANTH NAGAR

# Alankar Vridhi Villas



Thank You



**+91 95515 47777**

Website: [southlanddevelopers.in](http://southlanddevelopers.in)